



June 2024 Newsletter

President's Message-Ginny Sparlin

Hi Everyone,

Hope everyone is doing well. Summer is really cookin'! It's great; can't wait for the fresh tomatoes!

Next Saturday will kick off our Summer Paint Parties for this year, and Marilyn and Deb have a great time planned for us all! Look for information and supply list further into this newsletter. Hope to see you all there, at Marilyn Corners home, 1763 S. Leyden, Denver, Colorado, 80224.

10:am, Saturday, June 22.

Come and learn a little something new.....

See you soon,

Ginny Sparlin

Monthly Program Report-Deb Poster

PAINT PARTY TIME 2024

TOUR EUROPE:

MEET THE IMPRESSIONISTS

Saturday, June 22, 10am-2pm

Marilyn's Corners home, 1763 S Leyden, Denver 80224

Please RSVP to Marilyn as a text or voice message ASAP at 303-249-1009.

Bring the following supplies:

- A wood book box (Michaels) OR 9"x12" (or 8"x10") sketch book/ journal (5° Below) with a hard cover; OR surface of your choice no larger than 9"x12" to apply gold or silver leafing to. Wood surface must be prepped ahead of time. We have free 8"x8" canvas boards available as well.

- **BRUSHES:**

1" flat Bristle (stiff) brush - you will need an inexpensive SET of assorted bristle brushes (Walmart, Michael's, Hobby Lobby) for our second project that includes flat, angle and round - we used 2 - 3 brushes, flat and angle, sizes 1", 12 and 10 - bigger sizes as we're painting on 12"x16" canvas. None of the brushes need to be new. We encourage you to use long handled brushes.

- 1" soft flat brush for buffing the gold leaf
- paper towels
- pencil
- scissors
- Table easel

VERY IMPORTANT...PLEASE, PLEASE, IF YOU HAVE ANY QUESTIONS CALL DEBBIE 720-217-2383 OR MARILYN 303-249-1009

BE SURE TO MARK JULY 20 AND AUGUST 17 to finish these 2 different projects we're starting!

Sunshine Report- Karon Sorensen

I'm sorry to inform you that Jan Wells, one of our members, passed away after a short bout with ovarian cancer on May 23rd. Jan and I worked together for ten years at Western Union before retiring in 2014. We decided to try our hand at decorative painting and had many great times painting together and with our other members. Jan will be missed by all of us.

We have no birthdays this month.

Hospitality Report-Andrene Schmelzer

Thanks go out to Andrene and Catherine for supplying treats in May. Marilyn our hostess provided beverages as usual.

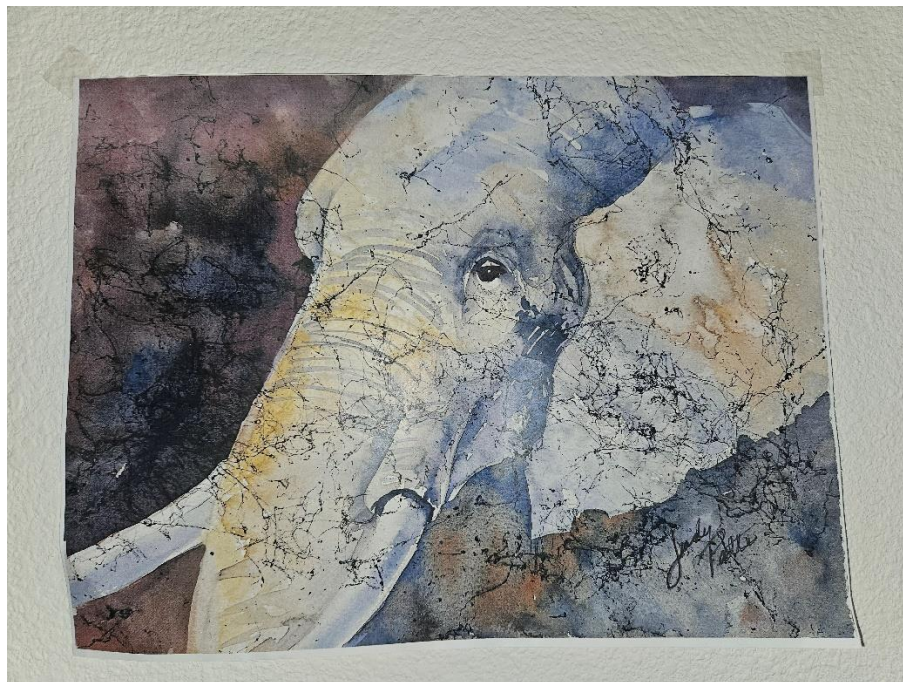
For the June paint party at Marilyn's, I have the following volunteers so far. Karon....something sweet. Dubraska....something savory, Melinda....crackers and dip, Debbie....something healthy.

If you can think of anything you would like to bring, please consider adding to this list.

For July, I already have a list started. It will be in the next newsletter.

Local Teacher Seminar Report-Andrene Schmelzer

Coleen Nelson will be teaching a watercolor class on September 28th, from 9am until 1pm at Judy Patti's studio. It is an elephant on a quarter sheet of watercolor paper.



The fee is 35.00 and includes the pattern and color photo which she will have at the class. If you do zoom, Andrene will get the pattern to you, or you can stop at the studio and pick up from Coleen.

You also have a photo from the newsletter to refer to. She will give me a supply list for a future newsletter and she also offers a palette for a small fee.

To reserve a spot call Andrene and give Linda Beaty a check. The studio holds 14, so if you want in person sign up early.

Tole Chatter-Melinda Barnes

Tracy Moreau... Did you Know (Many of you know this, but some of you may not)

Speed Up Drying Time

If you need your layers to dry a little faster, break out a hair dryer or a heat-it craft tool. Set it to its coolest, lowest setting to avoid making the paint bubble or crack. Hold it at least 6 - 8 inches away from the surface and keep it moving to avoid sitting in one spot too long. This is ideal for Decorative painting due to the thin layers used. Heavier-bodied paints should be allowed to dry on their own or use a drying additive.

Did you Know

Because there is no true black color, all “black” pigments and dyes really just look black. They’re made up of a combination of other pigments in specific combinations to reflect the least amount of light possible.

You can sign-up for Tracy's newsletter. She is sending a newsletter a bit more often now, but has a discount code and new products and information.

<https://tracymoreau.net/>

TIP Chat: Paint from the MIDDLE - Peggy Harris

When base painting shapes, begin painting in the MIDDLE of the shape. This deposits the bulk of the paint away from the edges and allows you to deliberately spread the paint to the edges, giving you SUPERIOR CONTROL to adjust the final SIZE and CONTOURS of the shape. Outlining a shape and then filling the interior leads to size/shape inaccuracies and deposits the heaviest paint on the edge, often creating an unmanageable ridge.

<https://peggyharris.com/>

Painting World Magazine Blog and Free pattern by Debby Forshey Choma

The blog has interesting articles and a free pattern each month.

<https://paintingworldmag.com/f/pwm-blog---may-16-2024>

My newsletter article is short this month and thought I would add this article. This is a repeat from a year or two ago, maybe longer. <grin>

Patty Rawlinson... 7 Common Questions about Painting Banners

1. How to Prep:

Roll on the paint ...no need to seal the Roc Lon

Rolling is important because brushed on base-coats seem to pool when painting canvas type surfaces

2. Which side to paint on?

You can paint on either side of Roc Lon, I personally prefer the rough side, because I like the texture.

3. How or when to cut the base of the banner:

This depends on whether or not it is a cut out design or a standard flag shape:

If it is a standard Flag shape pre-cut before painting, make sure to leave enough at the top to fold over for hanging.

If it is a cut out design then you cut it out after you paint it.

If you don't use Roc Lon and want to use canvas instead, then you'll need to hem the canvas.

4. How to prevent the edges from curling?

Give the back of the project some weight.

Meaning... give it a base coat or varnish it.

If the back is "raw" and the front is heavy with base-coats and varnish then of course the cloth will have a tendency to pull forward.

I honestly haven't had a problem with this, because I always do something to the back.

Note: The worst curling I have seen was when a customer used "Fini" on a banner, for whatever reason it makes things shiny and really curly

5. How to Hem for hanging:

You have a few choices:

Hem it with a sewing machine

Use Velcro or magnets (I love the magnets)

6. How to finish a banner:

If you are going to hang a banner outside you MUST use an exterior grade varnish (period) I like to keep my products within brand when I can and use DecoArt

DuraClear Matte Varnish for my banners and stepping stones.

7. Why use Roc Lon?

Oh My... let me count the ways. (grin)

Regular canvas frays.... (messy)

Roc Lon is cheap with no prep! (yay)

Roc Lon comes in wide lengths for a variety of projects (Flexible)

The weight of Roc Lon is perfect for a lot of "regular weight" projects. canvas is soooooo heavy it makes table runners a drag to display!

www.CreativeArtsLifestyle.com

Decorative Painters Academy... Have you checked the new classes and videos that have been added? The classes are fabulous and you will be pleased.

<https://decorativepaintersacademy.com/>

Happy Painting,

Melinda

Newsletter Compiler-Verlene Siska

If you feel you are receiving this newsletter in error, please reply back asking that your name be removed.

<https://rockymountainhiartists.com>